

# MPEGIOPro

4-Channel Realtime Hardware MPEG 2/4/1 Video Encoder with OSD, Streaming & SDK

## User Manual

Version 1.0.5

Copyright © 2007~2011 [Inventa Australia Pty Ltd](#)



### Table of Contents

1. Main Features	-----	2
2. Package Contents	-----	2
3. Minimum System Requirement	-----	2
4. Hardware Installation	-----	3
5. Software Installation	-----	4
6. Starting the Software	-----	7
7. User Interface	-----	7
8. Main Functions	-----	9
8.1 Record (Capture Video)	-----	9
8.2 Text Overlay	-----	11
8.3 Image Grabbing	-----	14
8.4 Streaming Video	-----	14
8.5 Motion Detect	-----	15
8.6 Minimize	-----	17
9. Setup Parameters	-----	17
9.1 Video Recording Set-ups	-----	18
9.2 Video Encoding Parameters	-----	20
9.3 Audio Encoding Parameters	-----	21
9.4 Other Set-ups	-----	21
9.5 Setup During Recording and Streaming	-----	21
10. Command Line Switches and Window Messages	-----	21
11. Drop Down Menu	-----	22
12. Default Parameter Values	-----	22
13. Create DVD from Captured Video Files	-----	23
14. Running Multiple MPEGIOPro Cards Simultaneously	-----	23
15. Support	-----	23
Appendix 1: Keyboard Short-Cuts	-----	23
Appendix 2: Mouse Clicking	-----	23
Appendix 3: Drop-down Menu Hot Keys	-----	24
Appendix 4: Hardware Specification	-----	24

## 1. Main Features:

MPEGIOPro is a 4-Channel realtime hardware MPEG video encoder PCI card with many powerful features:

- Realtime Capture 4-Channel superior-quality video/audio as MPEG2, MPEG4(H.263) or MPEG1 files
- **Live Stream** All Channels' Video/Audio to Any User-Defined TCP/IP Address in Unicast or Multicast mode
- Realtime Preview all channels on PC's screen with no visual delays between incoming video and screen video
- All channels can capture/stream full D1 size (720X576 or 720X480 Pixel) video simultaneously
- Support up to **4 Cards** in One PC to **Simultaneously Record & Stream 16-Channel Full D1-Size MPEG Video**
- Each Input Channel Can Record Video Only, Stream Video Only, or Record and Stream Simultaneously
- All Channels' Recording and Streaming Parameters Can Be Individually Defined
- Wide-Range Capture/Streaming Data Rates 128Kbps~15Mbps for MPEG1, MPEG2 & MPEG4 formats
- Various Video Capture/Streaming Frame Sizes from 176X120 to 720X576-Pixels
- Multiple encoding Frame Rate supported: 23.976fps, 24 fps, 25fps, 29.97fps, 30fps, 50fps, 59.94fps, 60fps
- Allow **Multiple Aspect Ratio** Encoding & Streaming: 4:3, **16:9(Wide-Screen)**, and Square PEL
- **Forever Video & Audio Sync** during video preview, capture, streaming and in the recorded files
- Video Capture Process Can **Seamlessly Split Files** either manually or at user-defined file size or time
- No single frame lost during video splitting: combining all split files will form the exact original video stream
- Instantly Start Video Capture at User's Request (manually or programmatically) without lengthy delays
- Start Video Capture as Video Signal Appears
- Stop Video Capture after Video Signal Disappears for a period of user-defined time
- Pause and Resume Recording without closing recording file
- Realtime **Overlay Text/Time** onto Recorded MPEG File, Streamed Video and Previewed Video
- Overlaid Text Can Have Different Size, Position, Duration, Black/White Colour, User-Definable Frames
- Text Overlay Can Contain Any Text, or Current Encoding File Name, Video Bit Rate, MPEG Type, etc
- Simultaneous Multi-line Text Overlay: max. 450 characters (15 rows X 30 columns) can be overlaid
- **Motion Detect** is supported by on-board hardware for 9 separate regions on every input channel
- **Motion Detect** can trigger recording, e-mail, audio-playback, image grabbing and on-screen text feedback
- **Motion Detect** regions can be displayed on screen with different colours in all channels
- Capture still images in various formats: JPEG, BMP, GIF, TIFF, and PNG
- Capture/Stream DVD-Compliant or arbitrary MPEG2, MPEG4 or MPEG1 video files
- Captured/Streamed DVD-Compliant files can be burnt to DVD movie immediately without re-compression
- Capture Audio-Only MPEG files in small sizes without video components
- Realtime on-screen preview video and audio always in sync with incoming video signal
- **PAL and NTSC** video format are automatically detected and switched
- Composite/BNC Video Input
- Stereo Audio Input
- Hardware-encoding chip built-in, low system resources needed: Pentium4 3GHz can record 16 Channels
- Any-length Timer Recording and Date-Time-Scheduled Recording with user-definable file names
- Support live colour change on incoming video
- Automatic email-out of warning messages on signal loss, disk full and start/stop conditions
- Recorded video **file name can contain multiple fields** inc. recording date, time, video length, video format, etc.
- Loop Disk and Split File Number Reset functions to automatically free disk space on pre-set conditions
- Work on Windows XP, Windows Vista and Windows 7 PCs with PCI slot
- Include **SDK** with full C++ and VB source codes for Customized Software Development

## 2. Package Contents:

- PCI Card
- Multi-Input Video and Audio Connectors
- One 4-Wire Audio Cable for Audio Preview
- One Installation CD
- One User Manual

## 3. Minimum System Requirement

**Hardware:** Pentium4 or AMD Athlon CPU based PC

**Software:** Microsoft Windows XP SP2, Windows Vista or Windows 7, DirectX 9 and above.

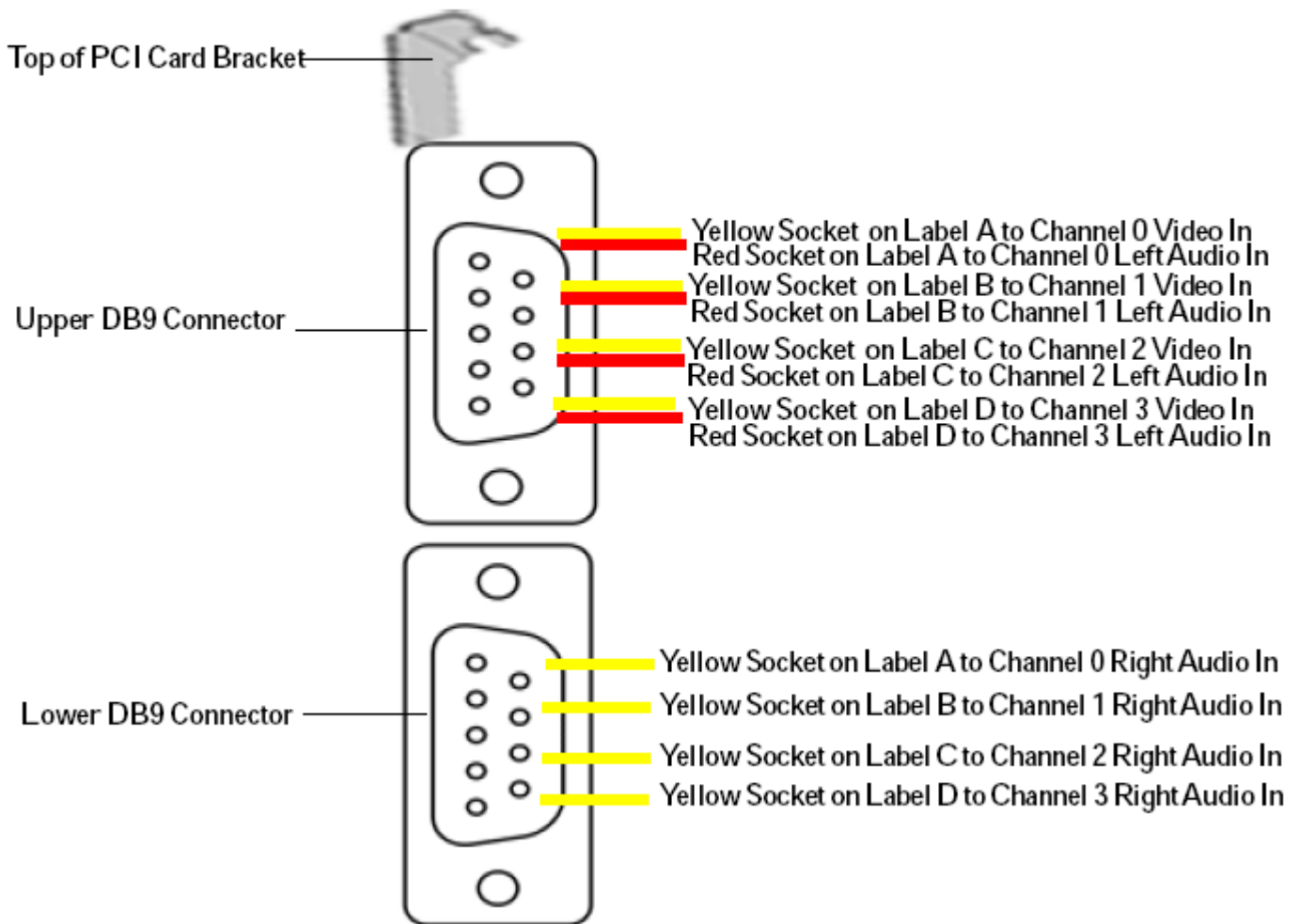
## 4. Hardware Installation

Un-plug the PC's power cable, open PC case, locate a free PCI slot, plug in the **MPEGIOPro** card and screw it firmly to the back-panel.

Plug in video/audio cables between the external video output devices and **MPEGIOPro**:

For each video/audio input channel (as labeled A, B C, D on the BNC connectors), connect the external video input to the Yellow BNC/RCA socket on the **Upper DB9 connector**, connect one stereo audio input to the **Red** socket of the **Upper DB9 connector** (bound together with the **Yellow** video socket on the upper DB9 connector), and connect the other stereo audio input to the **Yellow** socket on the **Lower DB9 connector** (the Red BNC socket on the lower DB9 connector is NOT used):

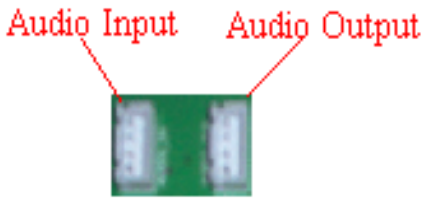
### For Each Incoming Video / Audio Channel:



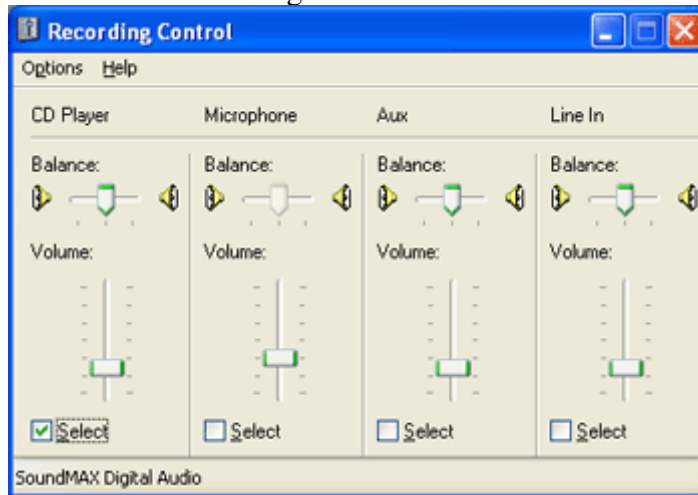
To preview (hear) live audio pass-through using PC's sound card, plug the 4-wire Audio Cable



between the "Audio Out" white socket (the right socket) on the **MPEGIOPro** board:



and the “CD-Audio In” or “Aux Audio In” socket on your sound card or motherboard: Also the sound card’s “Recording Control” should select the “CD-Player” or “Aux” port:



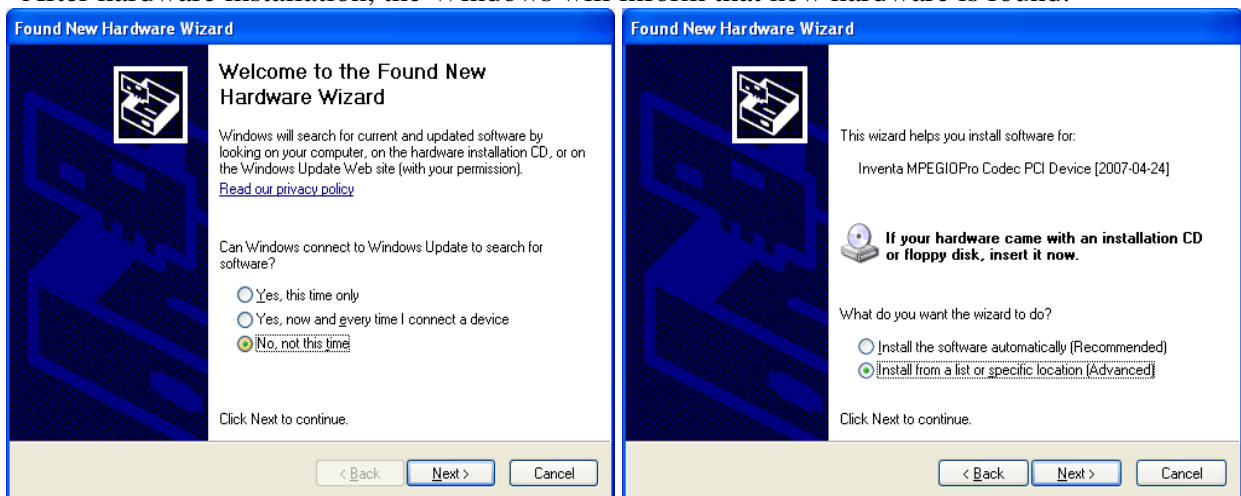
### Special Notes on audio preview:

1. Only the audio signal passing through the Upper DB9’s Red socket reaches the sound card’s CD-In or Aux-In (so can be heard), although both audio channels are recorded and/or streamed out.
2. Regardless the sound card input connection, audio connected to the upper and lower DB9 connectors’ sockets are always recorded and streamed out, i.e., as long as audio are connected to upper/lower DB9 connectors, they will be captured by **MPEGIOPro**, independent of the connection status of the “Audio Out” socket on **MPEGIOPro** card, and the sound card’s CD-In / Aux-In sockets.

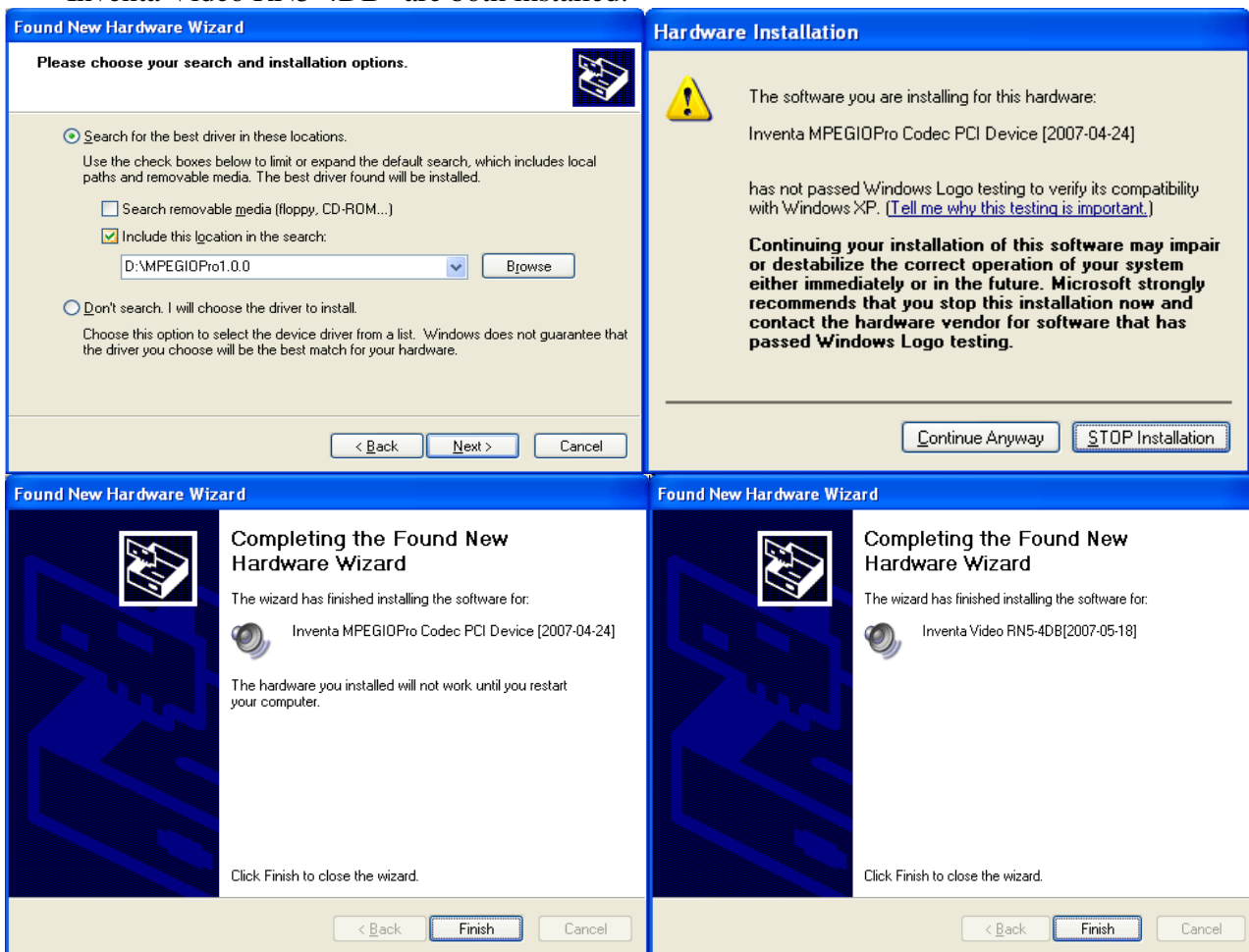
## 5. Software Installation

Software installation has two steps: device driver software installation and application software installation.

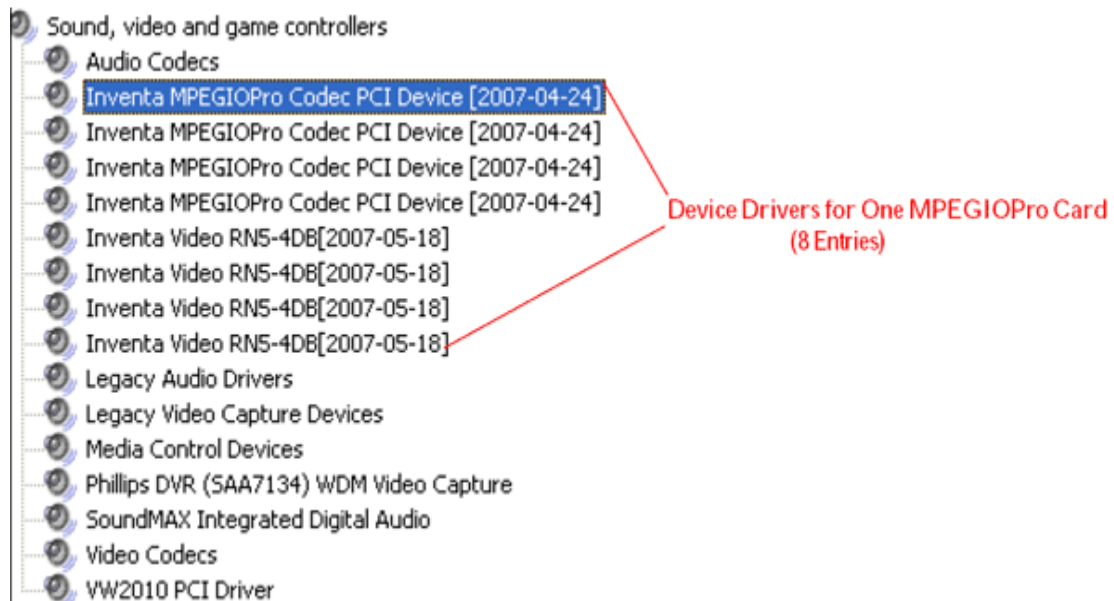
1. After hardware installation, the Windows will inform that new hardware is found:



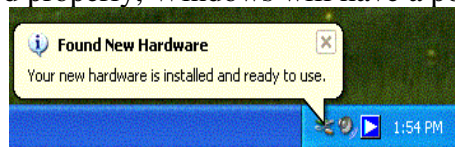
- Put the installation CD into PC's CD/DVD drive, click "Next" button, let Windows search for device driver specifically from the CD ROM. During the driver installation, ignore those warnings claiming such as the device driver "has not passed Windows Logo testing..."(Win XP) or "Windows can't verify the publisher of this driver software" (Windows Vista or 7) etc, click "Continue Anyway" (in Windows XP) or "Install this driver software anyway" (in Windows Vista/7) to keep going, until the driver "Inventa MPEGIOPro Codec PCI Device" and driver "Inventa Video RN5-4DB" are both installed:



After installation of the device drivers, check the Windows' ControlPanel->System->Hardware->DeviceManager ->Sound, video and game controllers category to make sure both device drivers are listed there without question mark or exclamation mark(note each input video channel has one pair of device driver entry so one MPEGIOPro card has 8 driver entries altogether. When more than one MPEGIOPro cards are installed these entry numbers will equal to the MPEGIOPro card number multiplied by 8).



When device drivers are installed properly, Windows will have a pop-up message box at the



lower right corner of the screen:

**Please note:**

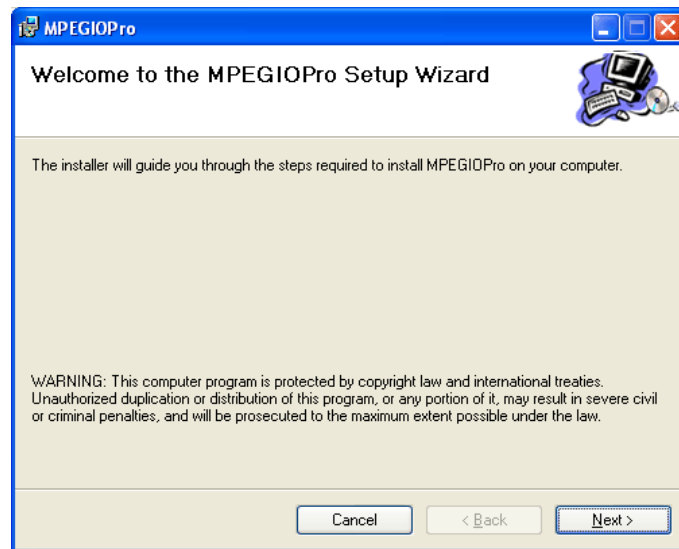
After re-installing Windows on a PC with MPEGIOPro card remaining seated in PCI slot, eight “Multimedia Controller/PCI Device” or similar lines will appear in the Windows’ ControlPannel->System->Hardware->DeviceManager window, preceded by a yellow question mark or exclamation mark, since MS Windows will not(cannot) install their device driver software. All these items will need “update driver” operation(right-mouse clicking then select “Update driver...”) to install the proper driver software from the setup CD, before the MPEGIOPro card and application software can be used properly. Alternatively, you can delete these question-mark/exclamation-mark preceded items(right-mouse click them then select “Uninstall”), highlight the PC’s name in the DeviceManager window then



select “Scan for hardware changes”:

then follow the same steps as at the start of this section to install device driver.

3. To install the application software, click “**N**ext” on the “MPEGIOPro Setup Wizard” window --- which normally starts up automatically after inserting the set-up CD, or will appear after double-clicking the “**S**tart.exe” software on the set-up CD:



then follow the on-screen instructions to install the application software.

4. Un-installing the **MPEGIOPro** application software can be done from Windows' Control-Panel.

## 6. Starting the Software



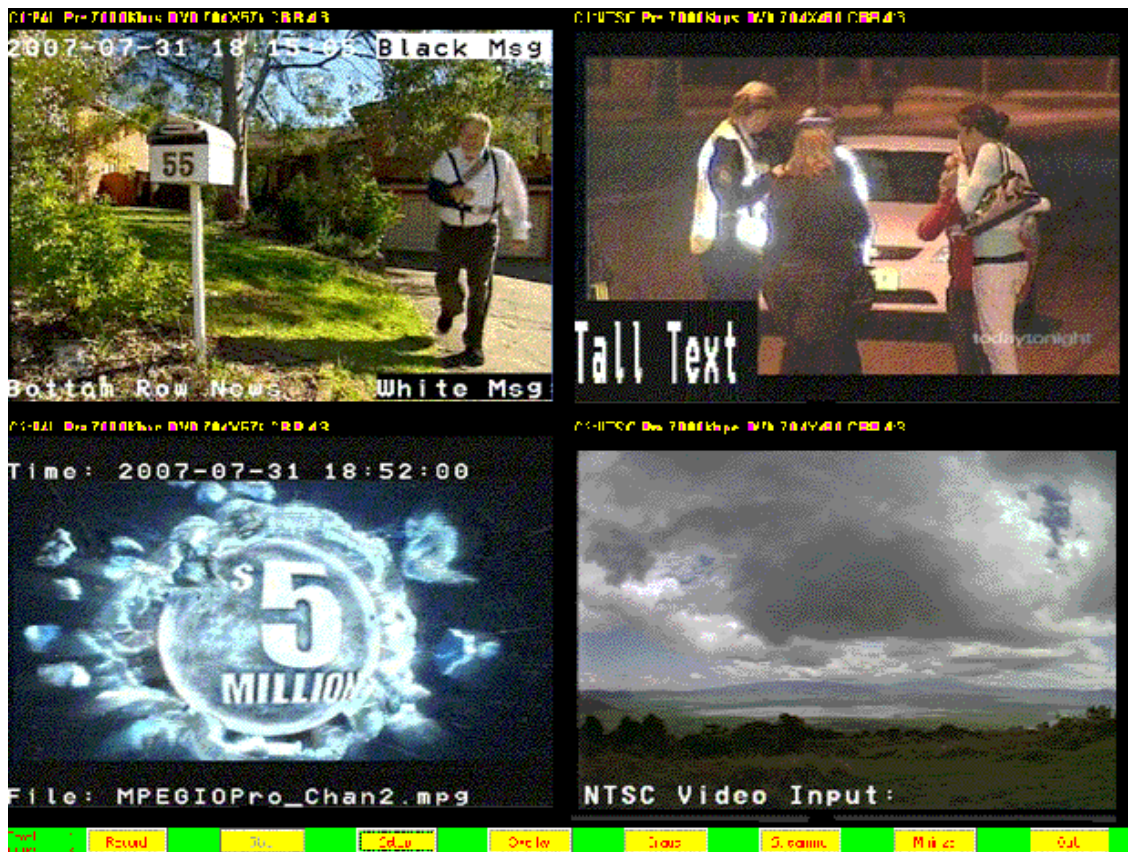
After a successful application software installation, an “**MPEGIOPro**” shortcut icon will appear on the Windows' desktop. Mouse double-clicking this icon will start the software. The software can also be started from Window's “Start->Program Files->Inventa->MPEGIOPro” group.

Please note:

1. **MPEGIOPro** start up will fail if other software using DirectX Overlay is running: Windows MediaPlayer, Vlc.exe etc video play software are typical examples that use DirectX Overlay, exit these programs before starting **MPEGIOPro** software ---- they can be re-started after **MPEGIOPro** has successfully started and is displaying live video.
2. Windows' **Hardware DirectDraw/Direct3D Acceleration** must be enabled (run **dxdiag.exe** from command-line to test and change) for **MPEGIOPro** to display live video properly.

## 7. User Interface

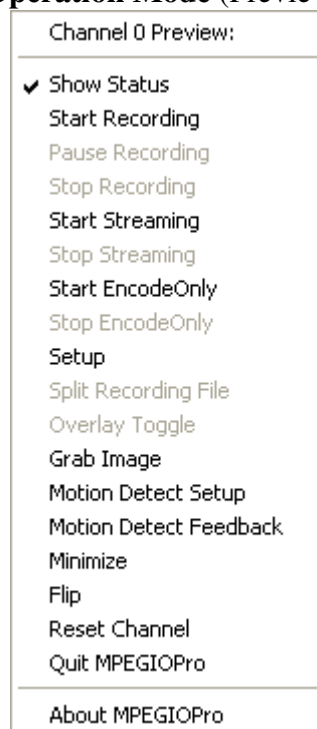
Once started, **MPEGIOPro** will expand on to full screen with multiple live preview video windows sequentially arranged from left-right, top-down, with the first channel (Channel 0) at the top left and the last channel at the bottom right:



plus a row of **function buttons** at the bottom:



**Right-mouse clicking** any channel's video area will also display a **drop-down menu** of selections, with the first line indicating that channel's current **Operation Mode** (Preview, Record, Encode, Stream -- see below):



**Left mouse Double-Clicking** inside any video area will expand that channel of video into full screen (double-click again or pressing **Esc** key to switch back).

Clicking most of the bottom row **function buttons** will open up their corresponding dialog windows to operate on multiple video channels, while selecting most of the items from the drop-down menu will only operate on that particular video channel.

At the left end of the bottom **function button row**, the total video channels available and the currently selected channel number are displayed: **Total: 4**  
**Chan: 2**. Left-mouse single clicking (selecting) any video area will also make that channel's audio heard from the PC's sound card output, while muting audio from all other channels.

## 8. Main Functions

Unless being supplied with command line switches to start recording or streaming (see details in "Command Line Switches and Window Messages" Section later), when first started, all **MPEGIOPro** video channels are in **Preview** mode: live video signal is displayed only. If a channel's "**Show Status**" option is turned on, its channel number (start from **0**), video signal type (**Pal**, **Ntsc**, or **nOne**), **operation mode** (**Preview**, **Record**, **Pause**, **Stream**, **Record&Stream**, **EncodeOnly** --- see below for the description on each of these modes), and some encoding parameters will be displayed at the top of its video area:

**2:P.Rec.7000K.DVD.704X576.CBR.4:3**. If the channel is recording, the recording information will also be

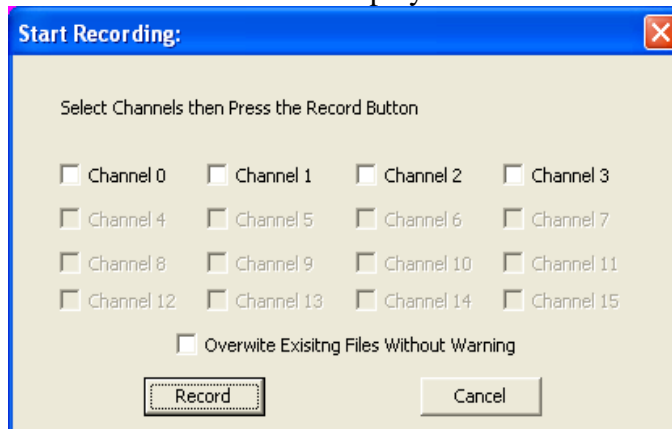
displayed at the bottom of the video area: **RecTime:0:00:09.Timer:0.Size:8MB.**  
**C:\aa.mpg**. When not in recording mode and the incoming video is switched between PAL and NTSC systems, the top line status will reflect the new signal type within 1 second.

Details on the **Operation Modes**, the **Red Acronyms** are used to display the modes in the **Status Line**:

- Preview:** Display incoming video only, no encoding, recording and streaming
- Record:** Display incoming video, encode the video and write the encoded data in disk file
- Pause:** During the **Record** mode, temporarily pause writing encoded data into disk file
- Stream:** Display incoming video, encode the video and stream the encoded data to network
- Record&Stream:** **Recording** and **Streaming** simultaneously
- EncodeOnly:** Encode video but does not write to file, nor stream to network – during this mode the **Motion Detect** (if defined, see section 8.5) can take place. Also during this mode starting record can happen faster, in particular starting multiple-channel recording.

### 8.1 Record (Capture Video)

Clicking the "**Record**" button  will display the "**Start Recording**" window:

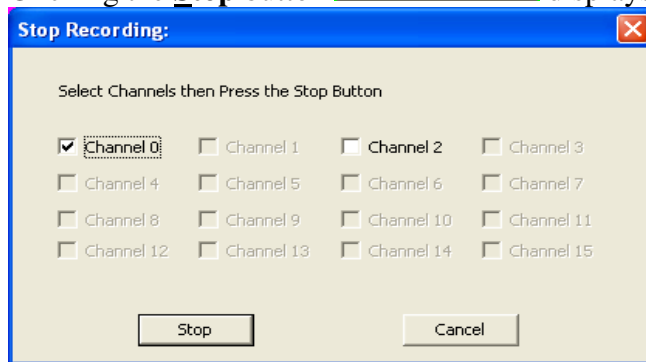


Check the numbers of the input channels you want to record video then click **Record** button will start recording. The recording parameters used for each channel are those defined through the “**MPEGIOPro Setup**” window (See Its Section later for details). Depending on the setting, a file name prompt will pop up either before or after the recording, or a pre-defined file name will be used silently. Warning dialogs on overwriting existing files will not appear if the “Overwrite Existing Files Without Warning” box is ticked.

The recorded file name including the full path will be displayed at the lower-left corner of each input channel’s video area if that channel’s “**Show Status**” option is on (through menu selection or Setup window). File name extension “.mpg” will be automatically added if this has not already been supplied.


During video recording process, several actions can be taken:


---- **Stop Record:** Clicking the **Stop** button  displays **Stop Recording** window:




where multiple channels’ recording can be stopped altogether. Selecting the “**Stop Recording**” item from the drop-down menu after right-mouse clicking a channel’s video area stops recording on that channel only.

---- **Pause/Resume Record:** Selecting the “**Pause Recording**” item from the **drop-down menu** will pause writing video data into the current recording file but keep the file open, selecting “**Pause**” item again will resume writing data into the same file. **Please Note:** Although Inventa MPEGIO hardware decoder and many software MPEG decoders such as the FREE MPEG2-decoder at <http://www.deskshare.com/download/mpeg2decoder.exe>, CyberLink PowerDVD etc, can often smoothly play back MPEG files with pauses, some software decoders will pause if MPEG files contain short pauses (usually < 30 sec).

---- **Text Overlay:** Clicking the **Overlay** button  will display the **Overlay Setup** window (see details in its Section below) where any channel’s text overlay can be added or deleted on the fly, and the modified overlay contents will be recorded into the current recording file immediately. Selecting the “**Overlay Toggle**” item from the drop-down menu after right-mouse clicking a channel’s video area will turn on or off all overlay display and recording for that channel.

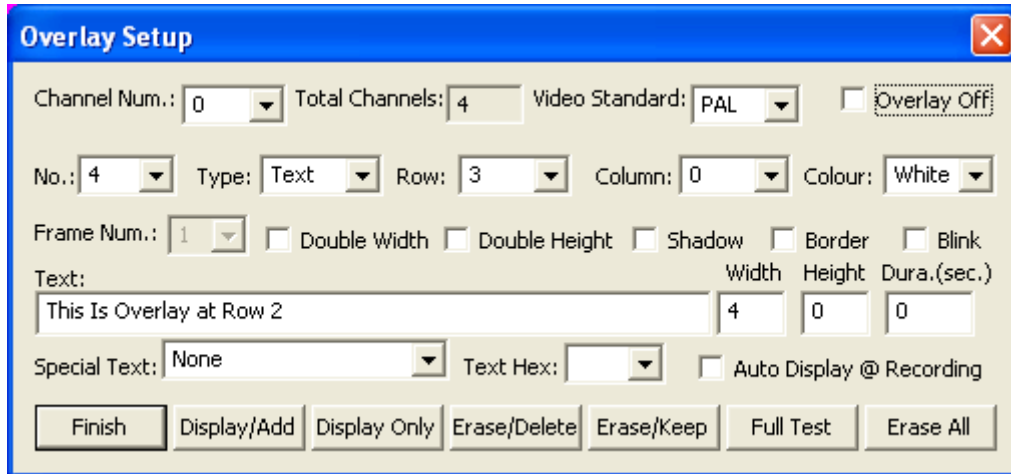
---- **Image Grabbing:** Clicking the **Image** button  will display the **Grab Still Image** window (see details in its Section below) where multiple channels’ still images can be captured, and their file name prefix, file types and serial numbers (for consecutively captured files) defined.

Selecting the “**Grab Image**” item from the drop-down menu after right-mouse clicking a channel’s video area will capture one still image for that channel. Images grabbed this way will have the file name prefix and file type as defined in the “**Grab Still Image**” window, and a separate serial number starting from 1, which is independent of the serial number defined in the “**Grab Still Image**” window, to be used in naming consecutively captured files.

- **Video Streaming:** Clicking the **Streaming** button  will display the **Streaming Video** window (see details in its Section below) where video streaming on multiple channels can be started and stopped. Selecting the “**Start Streaming**” or “**Stop Streaming**” item from the drop-down menu after right-mouse clicking a channel’s video area will turn on or off video streaming for that channel, using parameters defined in the **Streaming Video** window.
- **Colour Adjustment:** Instant Brightness, Contrast, Saturation and Hue can be adjusted, and reflected in the recorded file and streamed video immediately, from within the “**MPEGIOPro Setup**” window, see its section below.
- **Recording Timer:** Recording timer length can also be adjusted from within the “**MPEGIOPro Setup**” window.
- **Split File:** File Splitting on a recording channel can be selected from its drop-down menu’s “**Split Recording File**” item: once split, the current recording file is closed, new file is being used to write recorded video, and the new file’s name is displayed at the bottom line status area(if **Show Status** is On). The **MPEGIOPro** split current recording file without stopping its on-board encoding engine, therefore creates **Seamlessly Split MPEG Files:** sequentially combing all split recording together (such as using DOS command Copy /B) will create one MPEG file that equals to the un-split recording on the same incoming video signal, without losing any binary data --- no single frame or any information is lost.
- **Create Record Log, Loop Disk, Record Stop @ Signal Loss:** These can all be changed from within the **MPEGIOPro Setup** window, see their corresponding details in the **Setup** window section below.

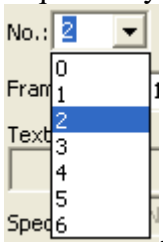
## 8.2 Text Overlay

Clicking the **Overlay** button  will start up the “**Overlay Setup**” window:

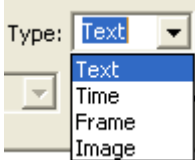


Each video channel has its own overlay contents, therefore the “**Channel Num.**” Combox box at the upper left corner will decide which video channel’s overlay setup is currently being modified.

**MPEGIOPro** allows multiple overlay items to be displayed simultaneously on each channel: these items are sequentially numbered and selectable through the “**No.:**” combo box below the “**Channel Num.**” box:



Each overlay item can be defined as type of “**Text**”, “**Timer**”, or “**Frame**”, selectable from the “**Type:**”



combo box: . All overlay items have to define their display **Row** and **Column** parameters, where **Row** has values from 0 to 14, and **Column** has values from 0 to 29. Other parameters such as double-width, blinking etc are item type dependent.

The “**Text**” overlay items allow user to type text characters into the “**Text**” edit field:

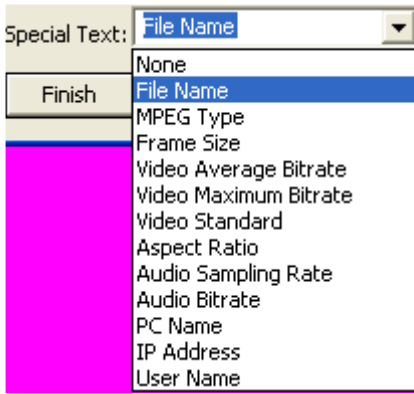


. Each row of text on the video frame can have maximum 30 single-width characters, or 15 double-width characters. **Text** overlay item can also define **Double-width**, **Double-height**, **Shadow**, **Border**, **Blink**, **Height**, **Duration**, and **Colour** parameters. The valid “**Height**” values range from 0 to 71: values 0 ~ 17 have the same size which is the default setting. The “**Dura.**” parameter defines how many seconds an overlay item will appear on the video, from the time it is displayed by the **MPEGIOPro** software.

The “**Colour**” parameter has only **Black** and **White** values.

The “**Text Hex**” combo box allows non-printable character values to be selected by their ASCII values.

The “**Special Text**” combo box allows special strings such as recording file name or video bit rate etc to be overlaid:



The “**Width**” field is not used by the **Text** overlay item, but will be filled as the string length (number of characters) each time a text overlay item is overlaid by clicking the “Display/Add”, or ‘DisplayOnly’” button.

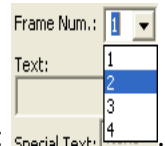
The “**Time**” overlay item displays the current date and time at the user defined **row** and **column** position. Only the “**Height**” and “**Dura.**” Parameters have effects on **Time** overlay item display.

The colour for **Time** overlay is always White.

Each video channel can have at most one **Time** overlay item displayed at any time.

Please note the “**Height**” parameter affects all text and time overlay items’ text height within a video channel: if one text item uses height 33, and later another time overlay item uses height 19, then all text and time displayed will have been using the later-defined text height 19.

The “**Frame**” overlay item allows maximum 4 rectangle frames to be displayed anywhere on the video

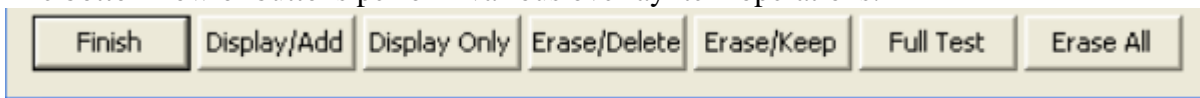


window: frames are numbered from 1 to 4 and selected from the “**Frame Num:**” combo box: Apart from **row** and **column** parameters, **Frame** overlay item has **Colour**, **Dura.** **Width** and **Height** parameters. The **Width** for **Frame** overlay item indicates the number of columns minus 1 a frame spans on a horizontal line, and the **Height** indicates the number of rows minus 1 it occupies vertically: a frame of 0 **Width** and 0 **Height** will display a 1 row height X 1 column wide frame, while a **Width 29** and **Height 14** **Frame** at **Row 0** and **Column 0** will display a full screen frame completely hiding any video in behind.

**Frames** can be used as background for a text string in the opposite colour, such as these:



The bottom row of buttons perform various overlay item operations:



The **Display/Add** button will add the currently defined overlay item into its item list and display it

The **Display Only** button will display the currently defined overlay item but not adding it to item list

The **Erase/Delete** button will delete the selected Overlay Item from the item list

The **Erase/Keep** button erases the currently selected overlay from screen but not deleting it from the item list

The **Full Test** button displays all 256 characters of the available font as a full screen overlay test


The **Erase All** button erases all defined overlay items and erase them from the screen

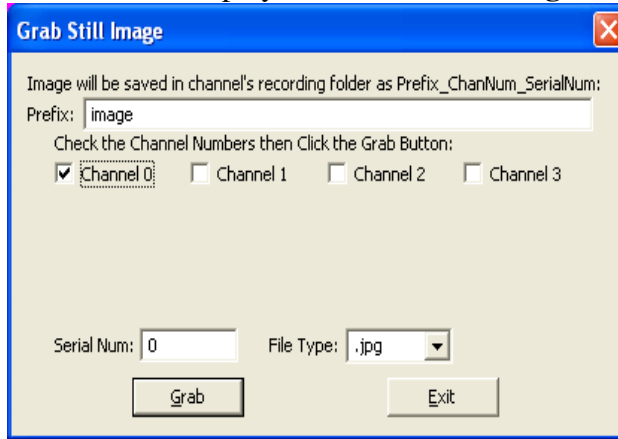
The **Finish** button exits the **Overlay Setup** window.

The “**Overlay Off**” check box temporarily disable all overlay items for this video channel: they will not be displayed until this check box is ticked again, or until the “**Overlay Toggle**” menu item is selected from the Drop-down Menu of this video channel(right-mouse clicking its video area).

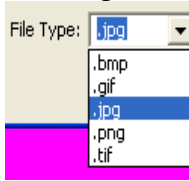
The “**Auto Display @ Recording**” check box allows an overlay item to appear each time this channel starts recording.

### 8.3 Image Grabbing:

Click the **Image** button  will display the “**Grab Still Image**” window:



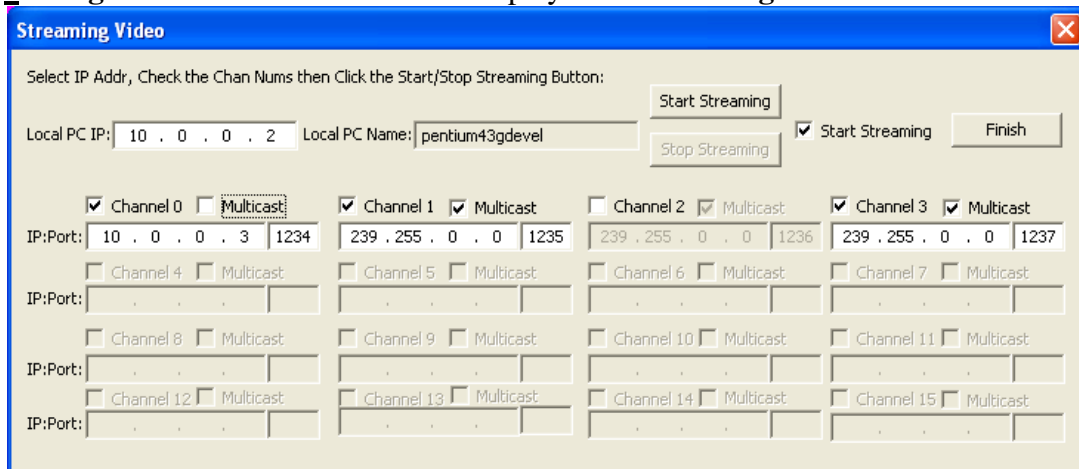
Tick the channel numbers then pressing “**Grab**” button will capture image frames for those selected channels,



in the format selected by the “**File Type:**” combo box: **Prefix**. The “**Prefix**” field allows user-defined prefix to be used as the first part of the created image file name, which will also consist of the channel number and a serial number as indicated in the “**Serial Num.:**” field. The **Serial Number** will automatically increase as each grab operation succeeds.

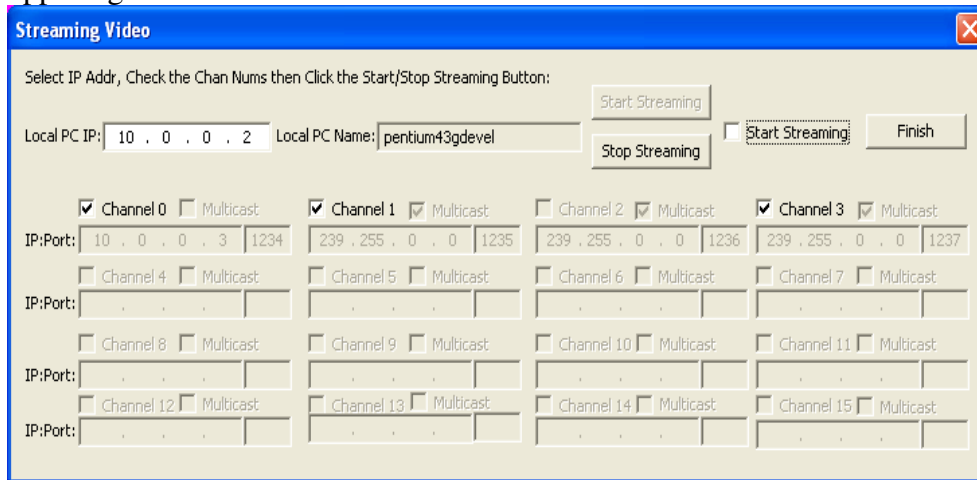
### 8.4 Streaming Video:

Click the **Streaming** button  will display the “**Streaming Video**” window:



Here each video channel can select its own streaming destination IP address and Port number, Multicast or Unicast mode, then clicking the “**Start Streaming**” button will make all selected channels to stream video simultaneously.

After the streaming starts, you can switch to the “**Stop Streaming**” mode by clearing the “**Start Streaming**” check box in the upper right area:



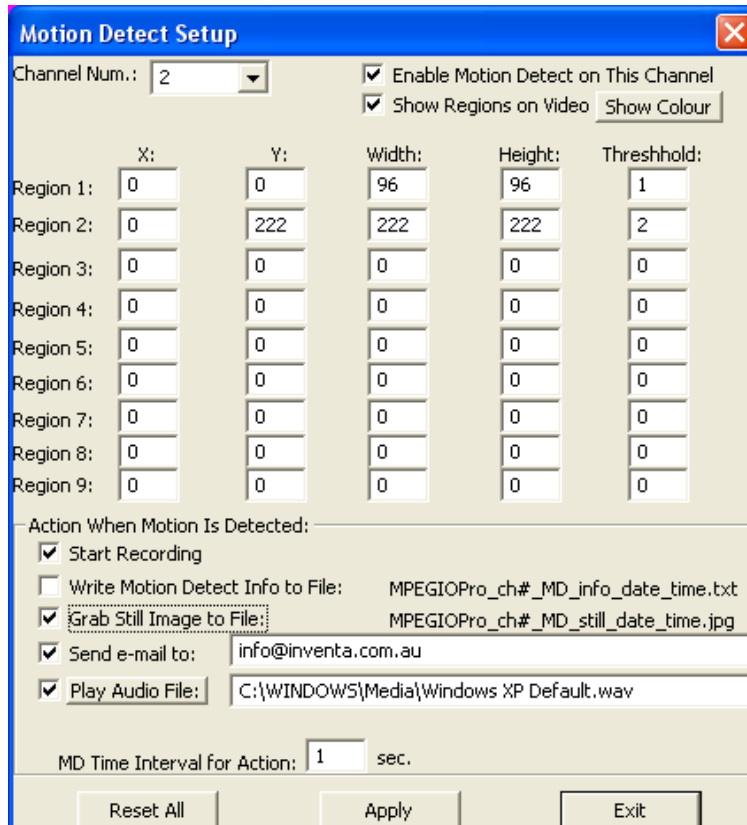
In this mode you can stop multiple streaming channels by ticking their channel number boxes then pressing the “**Stop Streaming**” button.

The “**Start Streaming**” and “**Stop Streaming**” modes can be manually switched by ticking or clearing the “**Start Streaming**” check box.

**MPEGIOPro** streams out unmodified **Program Stream MPEG2** or **MPEG4 (H.263)** video and audio, or **System Stream MPEG1** video and audio, or **Audio Elementary Stream MPEG2** audio, that can be received, displayed and recorded by various MPEG video stream client -- such as [MPEGIO](#) card or **VideoLan** (vlc.exe).

### 8.5 Motion Detect:

Clicking  button, or selecting the “Motion Detect Setup” drop down menu item, will bring up the **Motion Detect Setup Window**:







The “**MD Time Interval for Action**” (min. 1 sec.) defines the minimum time a second motion immediately following a previous one can cause **Action**: multiple motions detected consecutively within shorter time than this value will not cause any defined “**Action**”: e.g., if this value is 2 sec., and “**Send e-mail**” **Action** is defined, consecutive motions detected in less than 2 sec. will not cause e-mail to be sent --- This will prevent excessive “**Actions**” from happening, since **MPEGIOPro** detects motion very quickly.

The “**Reset All**” button will clear all defined regions’ X/Y, width/height/Threshold values.

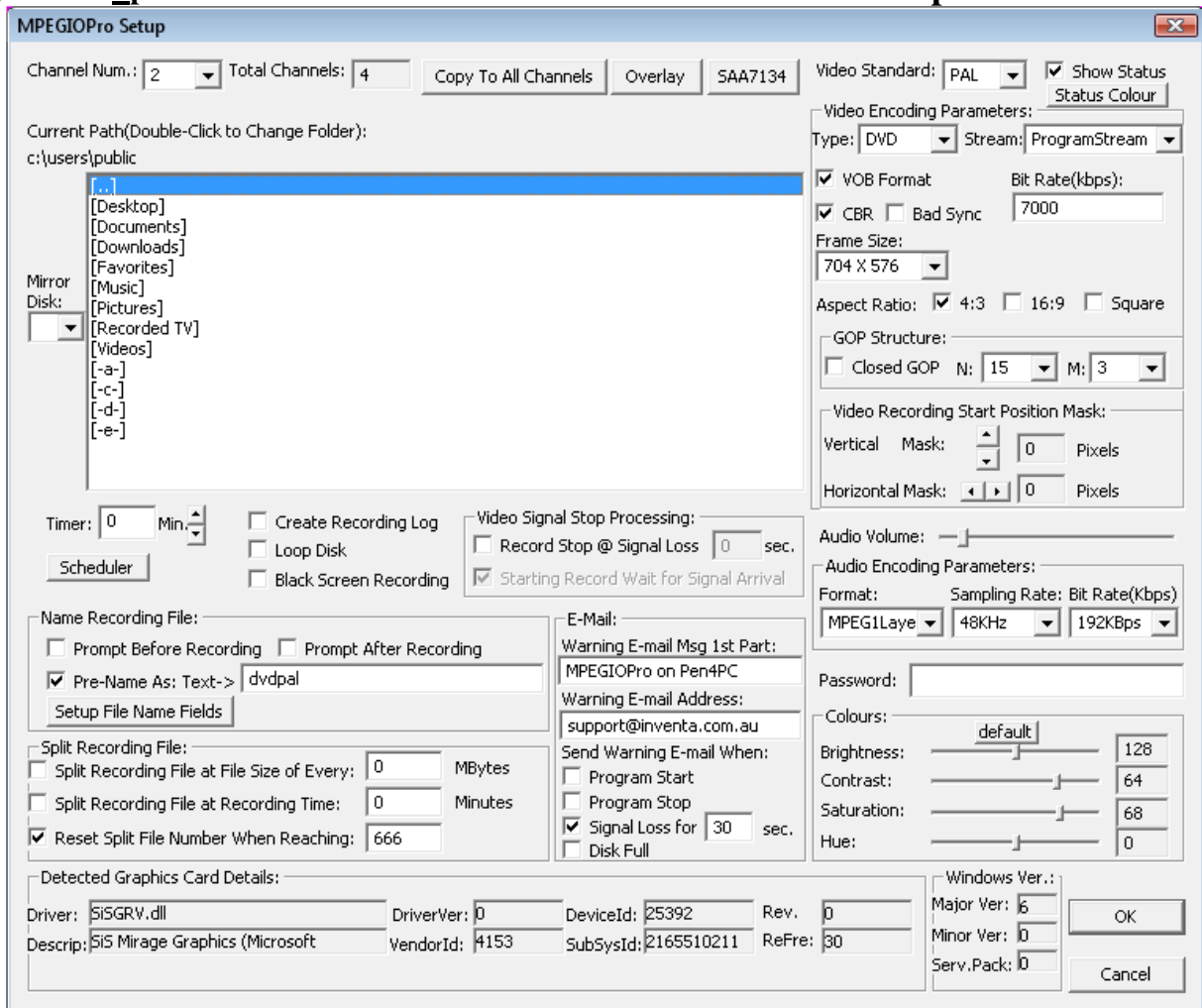
If a video channel defined Motion Detect Regions and ticked “**Enable Motion Detect**” box, starting video EncodeOnly, Recording or Streaming operation on this channel will also start its motion detect: on detected motions the defined “**Actions**” will be invoked and the “**Motion Detect Feedback**” Window will display relevant text. Motion Detect will stop when this channel returns to **Preview** operation mode.

## 8.6 Minimize:

Click this button  will minimize **MPEGIOPro** into an icon on the Windows’ Taskbar area: , where it can be left-mouse clicked to restore back to normal display.

## 9. Set-up Parameters

Clicking the “**Setup**” button  will start the **MPEGIOPro Setup** Window:

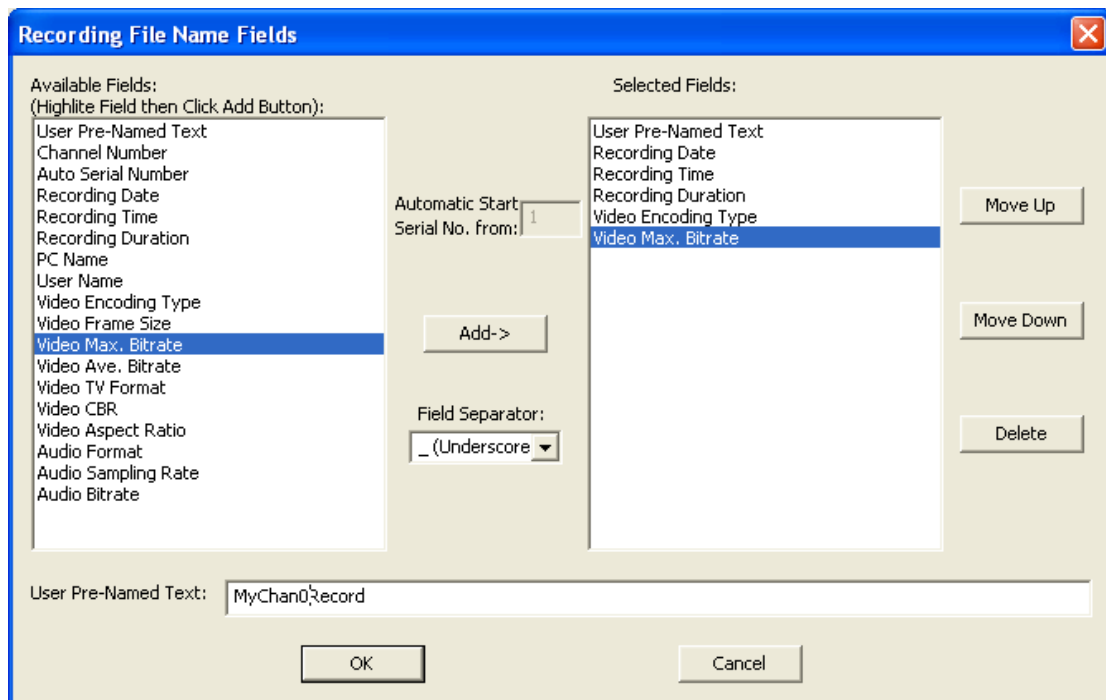


## 9.1 Video Recording Set-ups

The “**Current Path**” is the folder where all recorded or converted video files and grabbed still image files will be placed. Left-mouse double-clicking any path or drive name will select it as new “Current Path”.

If a “**Mirror Disk**” drive letter is selected (must be one of the fixed hard disk drives different from the current recording path’s drive), each video recording will create an identical mirrored file on the “Mirror Disk” with the same file name and path.

The recorded video files can be named each time before recording starts, each time after recording ends, or pre-named. If the “**Pre-Named as:**” box is ticked, you can either supply a fixed name typed in the field next to “**Text->**”, or press the “**Setup File Name Fields->**” button to open the “**Recording File Name Fields**” window:



**Recording File Name Fields Window**

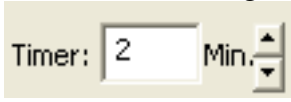
In this window you can select fields that will form the recorded video file name: each field can appear at most once, at least one field must be selected. Fields are separated by the “**Field Separator**” as shown in the middle of the dialog window. Double-click any “**Available Fields**” item will add that field into the “**Selected Fields**” list-box, where the fields can be moved up and down to form their relative positions in the recorded file name. The “**User Pre-Named Text**” field will contain any text typed in the text box in the lower part of the window. If this field contains nothing, **MPEGIOPro** will automatically assign “**MPEGIOPro\_Chan#.mpg**” as its contents, where the “**#**” will be a channel’s number, such as 0, or 3.

The “**Auto Serial Number**” field will increase its value by one each time a new file is recorded, its initial value can be assigned in the “**Automatic Start Serial No. from:**” box when this item is highlighted in the “**Available Fields**” list box.

If the “**Recording Duration**” field is selected, initially during the recording this field will have content “**0H00M00S**”, and this content will change to the actual recording time when recording stops, such as “**0H30M00S**”(30Min).

As an example, using the selected fields in the above screenshot, a 3-Min 15-Sec. recording will be named as: **MyChan0Record\_20070130\_164720\_0H03M15S\_DVD\_Video7000Kbps.mpg**

Before the recording, if the named file already exists, a warning dialog will appear before overwriting the file. Video recording can have a **Timer**, as indicated by the “**Timer:**” field. Zero value timer means endless recording until the “**Stop**” button is clicked, or **Stop Recording** menu item is selected, or **MPEGIOPro** software is ended. Once recording has started, the recording timer can still be adjusted from the vertical

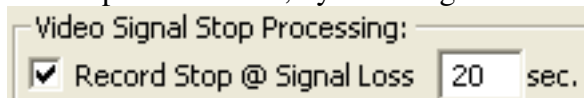
scrollbar control next to the timer field: 

During the recording process, new video files can be created (**Split**) without stopping the recording, by either specifying a file size limit (the “**Split Recording File at File Size of Every:**” tick box), a recording time limit (the “**Split Recording File at Recording Time:**” tick box), or manually selecting the “**Split Recording File**” item from that channel’s drop down menu.

Since each DVD/CD disk only has limited capacity, splitting recording file is very useful to spread long video recording across multiple files for multiple DVD/CD burning without interrupting the recording process. The split-video files will be named after the first recording file name with consecutive numerical numbers: if the first recording file is mpeg.mpg, the split files will be mpeg00001.mpg, mpeg 00002.mpg, etc., with an ever-increasing 5-digit numerical number appended to the first file name. However, if the box “**Reset Split File Number When Reaching**” is checked and the edit box to its right has a value bigger than 0, this 5-digit numerical number will repeat between 0 and this value. For example, if this value is set to 666 (as in the **Setup Window** screenshot two pages earlier), the split files created will be mpeg.mpg, mpeg00001.mpg, mpeg00002.mpg, ..., mpeg0665.mpg, mpeg0666.mpg, repeatedly. When the split recording is closing file mpeg0666.mpg (the last file in the sequence), the next split file name to be used will again be mpeg.mpg (the first file in the sequence), and the video previously recorded in this file will be overwritten. Using such a repeated split file name scheme will create a fixed sequence of recording files and prevent filling-up disk space.

Please note, if the “**Recording File Name Fields**” defined contains “**Recording Date**”, “**Recording Time**”, “**Recording Duration**”, or “**Auto Serial Number**”, then the “**Reset Split File Number When Reaching:**” box will be cleared / disabled and its number will be set to zero, since any of these fields will make the recording file names become dynamically changing during the recording process.

Stopping the video recording can be either **manual** (default), or automatic if video signal disappears for a certain period of time, by checking the “**Record Stop @ Signal Loss**” box and supplying signal loss time:




**Please note**, the video recording to hard disk only starts when video signal is available, that is, after video recording button is pressed or timer is started, if there is no video signal, the recording to hard disk will wait until the video signal appears. This is useful if the video tape inside VCR or Camera has un-recorded section at the start: you can start the tape playing early and be assured that the start of the video contents on the tape will always be accurately recorded by **MPEGIOPro** at the start of the MPEG file.

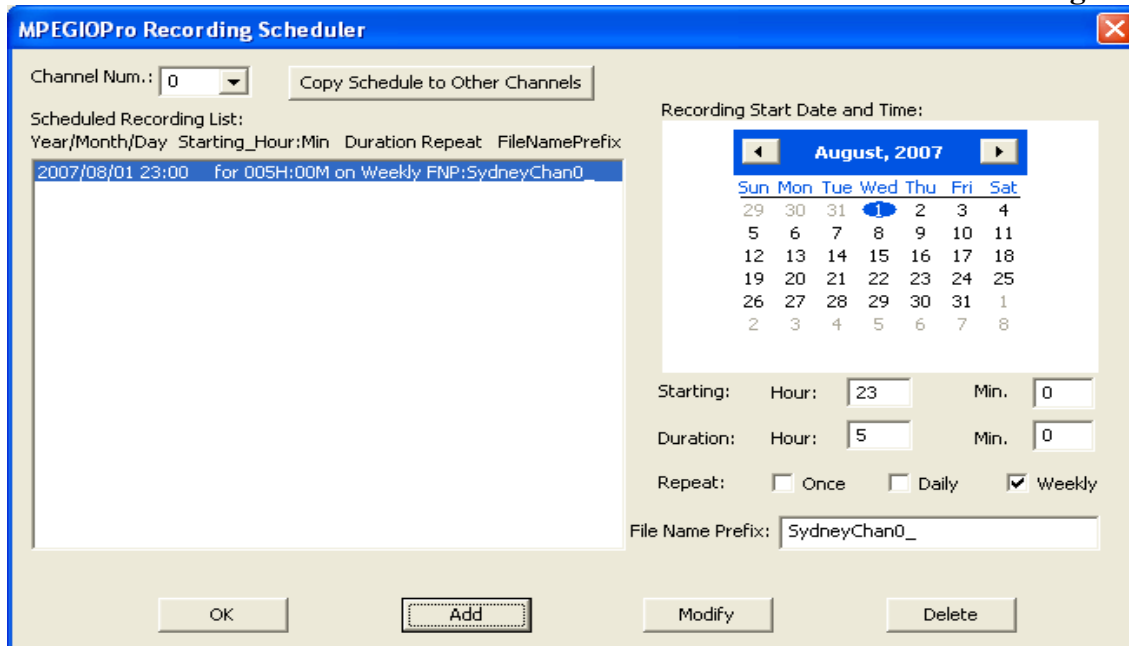
The “**Create Log**” check box indicates if a file named “**MPEGIOPro.log**” will be created and maintained under the system-drive folder (usually C:\) for Windows XP, or under the SYSTEM-DRIVE\Users\Public folder for Windows Vista/7, to log every recorded video file name, length, encoding type etc. This “**MPEGIOPro.log**” file will be used by the “**Loop Disk**” function in the following fashion:

If the “**Loop Disk**” box is checked, and the current hard disk’s free space becomes lower than 50Mbytes during the recording time, **MPEGIOPro** will automatically delete the oldest recording file as remembered by the “**MPEGIOPro.log**” file to increase free space (If a “**Mirror Disk**” is selected, the same oldest files on the

mirrored disk will also be deleted). To automatically increase free space as hard disk becomes full, tick the “**Create Log**” box together with “**Loop Disk**” box, so that all currently being recorded file names can be remembered by **MPEGIOPro.log** file that will be used for automatic deletion when free space becomes low.

The “**Black Screen Only**” check box indicates if total blackness will be recorded in the file to replace all video frames. Using this option could record a video file with very low video bit rate but normal sound, useful for creating a DVD disk that has long hours of audio but only black screen video.

The **Scheduler** button  can be clicked to show the **MPEGIOPro Recording Scheduler**:



**MPEGIOPro Recording Scheduler Window**

Adding scheduled recording will cause **MPEGIOPro** software to start recording at those times accordingly. Press the “**Modify**” button after changing an existing schedule’s content.

If one of the conditions (Program Start / Exit etc) under the “**Send Warning E-mail When:**” is ticked and an e-mail address supplied, **MPEGIOPro** will automatically send e-mail when the ticked condition happens. Note some e-mail software needs to be set up to allow automatic sending e-mail by other software: e.g. in Outlook Express 6, the “**Warn me when other application try to send e-mail as me**” box under the “**Tools->Options->Security**” must be cleared or a warning box will always pop up before sending e-mails.

## 9.2 Video Encoding Parameters

**Video Standard**(PAL or NTSC): Automatically Selected by **MPEGIOPro** Software, do not change

**Type:** DVD, VCD, SVCD, MPEG1/2/4. Use **DVD** if burning DVD movie disk is required.

**Stream:** Selectable from System Stream (MPEG1), Program Stream(MPEG2/4) and Audio Elementry

**VOB Format:** **Must Always Be Ticked**, unless creating DVD files for Ulead software to load faster

**CBR:** Constant Bit Rate(box checked) or Variable Bit Rate(box cleared)

**Closed GOP:** The encoded **Group-of-Picture** is closed(do not use previous frames) or not

**GOP N value:** number of frames in a GOP, between 1 ~ 256. GOP N = 1 and GOP M = 0: I-Frame only

**GOP M value:** number of B & P frames in a BP frame loop within a GOP, between 0~3, 0 = I-frame only

**Bad Sync:** Detect and process bad timing signal for old VHS tapes played through VCR

**Frame-Size (Resolution):** selectable in pixels, inc. 704X576(PAL), 704X480(NTSC) etc

**Frame-Rate:** encoded Video Frames per Sec., default to 25 fps for PAL, 29.97 fps for NTSC

**Bit Rates:** selectable in **Bit-Per-Second(bps)** unit, ranges between 128Kbps to 15Mbps

**Aspect Ratio:** 4:3,16:9, or Square. This changes the encoded pixels' shape, not frame-size.  
**Vertical Mask** (under "Video Recording Start Position Mask"): remove lines at top of video frame  
**Horizontal Mask** (under "Video Recording Start Position Mask"): remove pixels at left of video line.  
**Brightness, Contrast, Saturation, Hue:** Chroma and Luminance characteristics of the encoded video

### 9.3 Audio Encoding Parameters

**Format:** MPEG1 Layer 2, or AC3

**Sampling Rate:** 32KHz, 44.1KHz, 48KHz

**Bit Rate:** 32K, 48K, 56K, 64K, 80K, 96K, 112K, 128K, 160K, 192K, 224K, 256K, 320K, 384Kbps

### 9.4 Other Set-ups

**Channel Num.** Combo Box: select which video channel's parameters will be displayed / changed

**Password Field:** if set then starting **Setup Window** will need to supply the correct password

**Audio Volume:** Only controls the channel's audio preview volume, will not affect encoded audio volume

**Show Status Box:** If display status lines in the channel's video area: status won't be recorded/streamed

**Status Colour:** Colour used to display status lines for this channel

**Copy to All Channels** Button: copy this channel's set up values to all other channels

**Overlay:** Same as pressing the **Overlay** button from the main **MPEGIOPro** window

**SAA7134:** Debug use only, do not enter

### 9.5 Setup During Recording and Streaming

During recording or streaming, most set-up parameters cannot change: the **Setup** window will disable their fields and buttons, and "Copy to All Channels" will not copy settings to any recording/streaming channel.

## 10. Command Line Switches and Window Messages

**MPEGIOPro** can be started with several command line switches when typed in DOS command box or supplied in the command line of a Short-cut icon's property, such as:

"C:\Program Files\Inventa\MPEGIOPro\MPEGIOPro.exe" -H -R0 -S0 -R2 -S3



Please Note:

1: the # in -R#, -S# is for digits 0, 1, 2, etc representing video channels

2. the "-U" switch is only for not to load some predefined OSD user fonts, so that software can start faster

3. the -F# indicates how often the software will refresh video overlay surface, default # is 30 ms.

**Note** refreshing video overlay surface is only necessary for some graphics card(such as Nvidia GeForce 7X00, 8X00) that will not display live video smoothly without constantly doing so(usually at 30ms per refresh). If your PC's graphics card(shown at the lower left corner of the **Setup Window**) is not those

brand/model with known live video overlay problems, you can safely supply **-F0** to disable refreshing to save some CPU cycles. The value used as the refreshing time (the # in **-F#**) is displayed as “**ReFre**” at the mid-bottom line on the **Setup Window**.

**MPEGIOPro** can receive user-defined Windows messages from MPEGIOPro SDK or other programs:

WM_MPEGIOPRO_START_RECORD	(WM_USER + 10) // WParam indicates chan#
WM_MPEGIOPRO_STOP_RECORD	(WM_USER + 11) // WParam indicates chan#
WM_MPEGIOPRO_START_STREAM	(WM_USER + 12) // WParam indicates chan#
WM_MPEGIOPRO_STOP_STREAM	(WM_USER + 13) // WParam indicates chan#
WM_MPEGIOPRO_MINIMIZE	(WM_USER + 14) // Window is minimized
WM_MPEGIOPRO_SPLIT_RECORD	(WM_USER + 15) // WParam indicates chan#
WM_MPEGIOPRO_GRAB_IMAGE	(WM_USER + 17) // WParam indicates chan#
WM_MPEGIOPRO_RESTART_CHANNEL	(WM_USER + 18) // WParam indicates chan#
WM_MPEGIOPRO_FLIP	(WM_USER + 19) // WParam indicates chan#
WM_MPEGIOPRO_QUIT	(WM_USER + 20) // Quit MPEGIOPro software
WM_MPEGIOPRO_PAUSE_RESUME	(WM_USER + 21) // Pause/Resume recording Toggle
WM_MPEGIOPRO_START_ENCODE_ONLY	(WM_USER + 22) // WParam indicates chan#
WM_MPEGIOPRO_STOP_ENCODE_ONLY	(WM_USER + 23) // WParam indicates chan#
WM_MPEGIOPRO_ENCODE_ERR	(WM_USER + 24) // WParam is chan#: Encoding error happened

Note “WM\_USER” is normally defined as 0x0400 by MS Windows SDK

## 11. Drop Down Menu

Right-Mouse click any channel’s video area displays the **drop-down menu**, most of the items there have been explained earlier regarding each channel’s recording, streaming, overlay, status, etc. Other items are:

**Reset Channel:** Hardware-reset a video channel, can be used in extreme situation, e.g. when channel suddenly has bad signal displayed: cannot use when channel is recording/streaming

**Flip:** flip the on-screen video display 180-degree horizontally, will not affect recorded video.

**Start EncodeOnly:** Start encoding video, without writing the encoded data to file or streaming them to network, the main purpose of entering this mode is to respond to Motion Detect, and/or to speed up subsequent **Start Record** operation (in particular when Starting Record on multiple channels).

## 12. Default Parameter Values

Each time on exit, **MPEGIOPro** saves its start-up parameter values in file “**MPEGIOPro.INI**” under SYSTEM-DRIVE folder (normally C:\) for Windows XP, or under SYSTEM-DRIVE \Users\Public folder for Windows Vista/7. If **MPEGIOPro.INI** file does not exist, or if holding down the Ctrl key while left-mouse double-clicking the MPEGIOPro icon, the software will start again using the default values, as listed here:

- Current Recording Path: System-Drive:\ for WinXP, System-Drive\Users\Public\ for WinVista or Win7.
- Mirror Disk: None
- Recording Timer: 0 (no timer)
- Name Recording File: Prompt before recording
- Split Recording File at File Size: 0(no split)
- Split Recording File at Recording Time: 0(no split)
- Reset Split Recording File Number: No
- Recording Stop @ Signal Loss: Not Used
- Video Encoding Parameters: DVD, 704X576-Pixels for PAL, 704X480-Pixels for NTSC, 4:3 Aspect Ratio
- VOB Format: Yes
- CBR (Constant Bit Rate) Encoding: Yes
- Max. Encoding Bit Rate: 7Mbps
- Average Encoding Bit Rate: 6Mbps
- Closed GOP: No
- GOP N Value: 15
- GOP M Value: 3
- Bad Sync Detect: No
- Video Encoding Frame Rate: 25 fps for PAL, 29.97 fps for NTSC
- Audio Encoding Parameters: MPEG1Layer2, 48KHz, 192Kbps
- Vertical Mask: 0

- Horizontal Mask: 0
- Show Status: Yes
- Overlay Items: None Defined
- Streaming IP Address for Multicast: 239.255.0.0, Port 1234 for Channel 0, Port 1235 for Channel 1, etc
- Streaming IP Address for Unicast: 10.0.0.3, Port 1234 for Channel 0, Port 1235 for Channel 1, etc
- Send Warning e-mail: No for all conditions
- Create Log(use MPEGIOPro.log to log all recordings): No
- Loop Disk(Delete Oldest Files Ever Recorded When Free Space Is Lower Than 50 MB): No
- Password for Setup Window: None
- Motion Detect: Not on

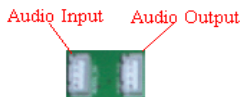
## 13. Create DVD from Captured Video Files

To create DVD movie disks from video files recorded by **MPEGIOPro**, a DVD Authoring Software, such as TMPGEnc DVD Author, NeroPro, Ulead DVDMovieFactory, Adobe Encore, etc, is needed. DVD menus, buttons, chapter points etc can be created from within the DVD authoring software.

## 14. Running Multiple MPEGIOPro Cards Simultaneously

Up to 4 **MPEGIOPro** PCI cards can operate in one PC simultaneously: **MPEGIOPro** software will automatically recognise how many total channels are available in a PC by querying the successfully installed device drivers of all **MPEGIOPro** cards, and display their video channels correctly on the screen.

The only extra connection needed for multiple **MPEGIOPro** cards is to link their audio preview sockets



together in tandem:

use the bundled 4-wire CD-Audio connection cables



to link the 1<sup>st</sup> card's "Audio Out" socket (the **right** white socket on the top when viewing the front side of the card with back-panel bracket on the left) to the "Audio In" socket (immediately to the **left** of the "Audio Out" socket) of the 2<sup>nd</sup> **MPEGIOPro** card, the 2<sup>nd</sup> card's "Audio Out" socket to the 3<sup>rd</sup> card's "Audio In" socket, the 3<sup>rd</sup> card's "Audio Out" socket to the 4<sup>th</sup> card's "Audio In" socket, and the 4<sup>th</sup> card's "Audio Out" link to Sound Card "CD-In" or "Aux In" socket. Any **MPEGIOPro** card can be used as 1<sup>st</sup> or last, no particular order is assumed.

## 15. Support

Technical support is at [support@inventa.com.au](mailto:support@inventa.com.au).

### Appendix 1: Keyboard Short-Cuts

E:	Streaming Video Window
I:	Grab Still-Image Window
M:	Motion Detect Setup
O:	Overlay Setup Window
Q:	Quit <b>MPEGIOPro</b> Software
R:	Video Recording Window
S:	Stop Recording Window
U:	Set-up Window
Z:	Minimize <b>MPEGIOPro</b> Window
Esc:	Restore from Single-Channel Video Full Screen Mode, or Quit Software

### Appendix 2: Mouse Clicking

Left Mouse Single Click:	Select current video channel and make its audio preview heard
Left Mouse Double Click:	Full Screen Mode for the current video channel or exit full screen mode
Right Mouse Single Click:	Display Drop-down Menu for one Video Channel.

### Appendix 3: Drop-down Menu Hot Keys

- A: About **MPEGIOPro**
- C: Reset This Channel
- D: Motion Detect Feedback
- E: Streaming Start or Stop on this channel
- F: Flip Video Preview Horizontally
- I: Grab One Still Image from this channel
- L: Split Recording File
- M: Motion Detect Setup
- N: Start/Stop EncodeOnly operation
- O: Overlay On / Off Toggle
- P: Pause / Resume Recording (into current file)
- Q: Quit **MPEGIOPro** Software
- R: Start Recording on this channel
- S: Stop Recording on this channel
- U: Display Setup Window
- W: Show/Hide Status
- Z: Minimize **MPEGIOPro** Window

### Appendix 4: MPEGIOPro Hardware Specification

Encode Video Formats: MPEG-1, MPEG-2 MP@ML, MPEG-4 Simple Profile@L1,L2 & L3, with extensions to full-D1,H.263. I, IP, IBP, IBBP Frames. PES & ES.
Constant and Variable Bit Rate Encoding User Selectable
Video 4:2:2 to 4:2:0 conversion
Video Inverse telecine(3:2 pulldown)
Video frame rates: 23.976fps, 24 fps, 25fps, 29.97fps, 30fps, 50fps, 59.94fps, 60fps
Video bits-rate from 128Kb/s~15Mb/s for MPEG1, MPEG2, and MPEG4(H.263)
Video resolution pixels PAL:176X144, 352X288, 480X576, 704X576, 720X576. NTSC:176X120, 352X240, 480X480, 704X480, 720X480
Video Encoding Aspect Ratio: 4:3, 16:9, Square PEL
Audio formats: MPEG-1 Layer II, AC3/Dolby 5.1, Audio sample rates: 16k, 22.5K, 24K, 32K, 44.1K, 48KHz Audio bit rates: 32Kbps ~ 384Kbps
PCI Bus v2.1 Compliance
Video Input Channels: 4 X Composite (BNC)
Audio Input Channels: 4 X Stereo Left and Right BNC
Physical Dimension: 239mm(Length) X 105mm(Height --- not including PCI Connectors of about 7mm)